

M1-SBFF-2FM SMARTBOX® Chamber System

The M1-SBFF-2 Fixed Flow Chamber Systems automate a three-stage euthanasia cycle at the push of a button: charging, dwell time, and exhaust. At the start of a cycle, doors automatically lock and will not unlock until CO₂ evacuation is complete. Clear polycarbonate doors provide visibility while the front-loading, swing-down design offers easy cage access. The airtight, gasket sealed doors prevent gas leakage during operation. The manifold design ensures even gas distribution. These systems accommodate the full range of rodent cages from all manufacturers.

Compliant with AVMA Guidelines

- Accommodates up to 40 shoebox mouse cages or 8 standard rat cages
- After starting system, technician is free to do other work
- Programs can be customized based on facility requirements
- Automation virtually eliminates operator error
- Electronically monitored safety system prevents operation when chamber door is not properly closed
- Doors automatically lock during operation and unlock after evacuation
- Two preset times - adult and neonate



Pre-Mounted Flow
Meter Included



*M1-SBFF-2 includes:
SMARTBOX Side Control Box, two M1 Chambers, Exhaust
Blower, 8 feet of 4" Exhaust Tubing, two 4" Hose Clamps
(Cart sold separately.)*

Required Accessories (choose one):



EA-6500
(use with cylinders)



FF-1130
(use with piped-in gas)

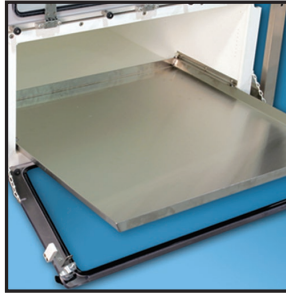
Optional Accessories



EA-1040



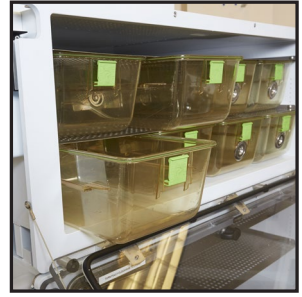
EA-1002



EA-5500

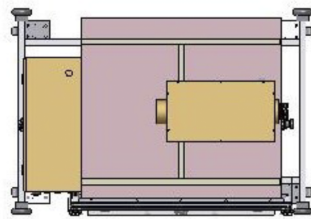


EZ-1336-C



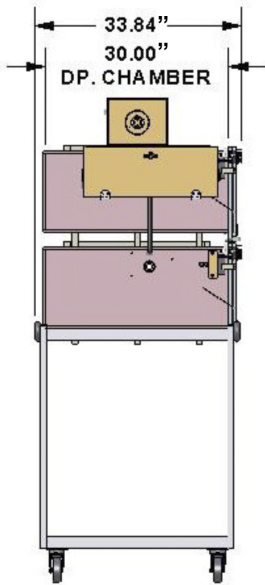
EA-1315

SMARTBOX®

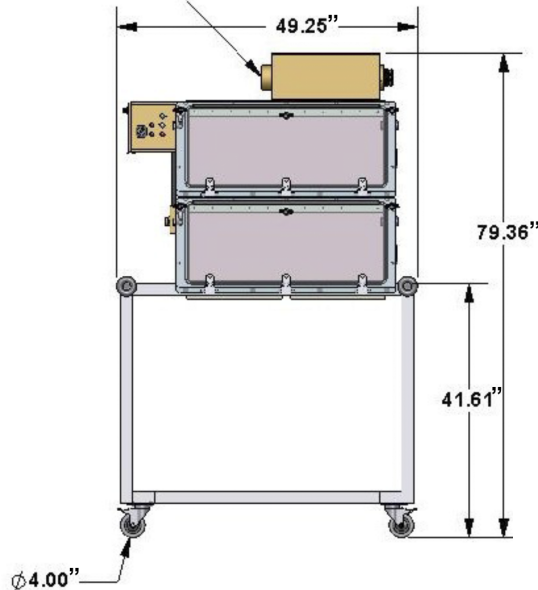


TOP VIEW

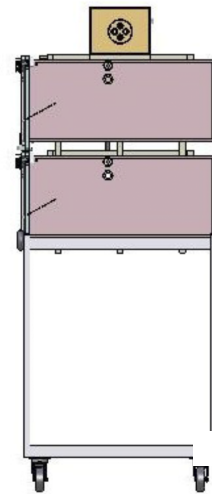
CONNECTS TO 4" HOUSE EXHAUST
REQUIRES 100 CFM



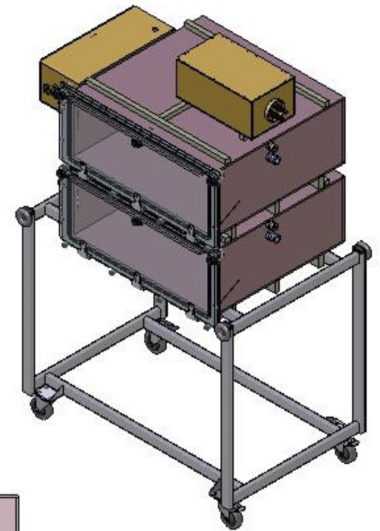
LEFT SIDE VIEW



FRONT VIEW



RIGHT SIDE VIEW



ISOMETRIC VIEW

INSIDE CHAMBER DIMENSIONS

32.0" W X 30.5" D X 12.5" H

M1-SBFF-2C SMARTBOX™ CHAMBER SYSTEM

REQUIREMENTS

ELECTRIC 120V 10 AMP
FLOW RATE 120 LPM OF CO₂
4" DUCT 40 CFM